

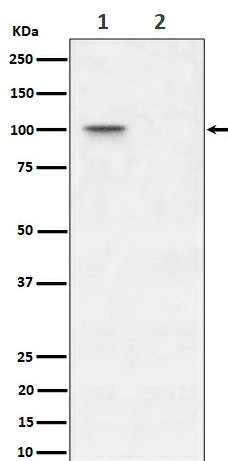
Product datasheet for TA424422

Nucleolin (NCL) Rabbit Monoclonal Antibody

Product data:

Product Type:	Primary Antibodies
Applications:	IHC, WB
Recommended Dilution:	WB 1:500~1:2000 IHC 1:50~1:200
Reactivity:	Human
Host:	Rabbit
Isotype:	IgG
Clonality:	Monoclonal
Immunogen:	A synthesized peptide derived from human Phospho-Nucleolin (T76)
Specificity:	Phospho-Nucleolin (T76) Antibody detects endogenous levels of total Phospho-Nucleolin (T76)
Formulation:	Rabbit IgG in phosphate buffered saline , pH 7.4, 150mM NaCl, 0.02% sodium azide and 50% glycerol.
Concentration:	lot specific
Purification:	Affinity-chromatography
Conjugation:	Unconjugated
Storage:	Store at +4°C short term. Store at -20°C long term. Avoid freeze / thaw cycle.
Predicted Protein Size:	100kDa
Gene Name:	nucleolin
Database Link:	Entrez Gene 4691 Human P19338
Background:	Nucleolin is the major nucleolar protein of growing eukaryotic cells. It is found associated with intranucleolar chromatin and pre-ribosomal particles. It induces chromatin decondensation by binding to histone H1.
Synonyms:	MS1116; NCL; Nucl; Nucleolin; Protein C23


[View online »](#)

Product images:

Western blot analysis of Phospho-Nucleolin (T76) expression in (1) 293T cell lysate; (2) 293T cell treated with Lambda Phosphatase lysate.