

Product datasheet for **TA424420**

SF3A3 Rabbit Monoclonal Antibody [Clone ID: OTIRA2239]

Product data:

Product Type:	Primary Antibodies
Clone Name:	OTIRA2239
Applications:	ICC/IF, IHC, WB
Recommended Dilution:	WB 1:500~1:2000 IHC 1:50~1:200 ICC/IF 1:50~1:200
Reactivity:	Human, Mouse, Rat
Host:	Rabbit
Isotype:	IgG
Clonality:	Monoclonal
Immunogen:	A synthesized peptide derived from human SF3A3
Specificity:	SF3A3 Antibody detects endogenous levels of total SF3A3
Formulation:	Rabbit IgG in 10mM phosphate buffered saline , pH 7.4, 150mM sodium chloride, 0.05% BSA, 0.02% sodium azide and 50% glycerol.
Concentration:	lot specific
Purification:	Affinity-chromatography
Conjugation:	Unconjugated
Storage:	Store at +4°C short term. Store at -24°C long term. Avoid freeze / thaw cycle.
Predicted Protein Size:	59kDa
Gene Name:	splicing factor 3a subunit 3
Database Link:	Entrez Gene 10946 Human Q12874

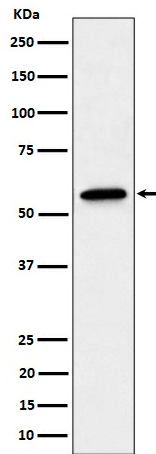


Background:

SF3A3 is subunit 3 of the splicing factor SF3A. Splicing factor 3a is a heterotrimer consisting of subunits 1, 2 and 3, and is necessary for the conversion of 15S U2 snRNP into an active 17S particle that performs pre-mRNA splicing. SF3A interacts with the pre-mRNA branch site early during spliceosome formation.

Synonyms:

PRP9; PRPF9; SAP61; SF3A3; SF3a60

Product images:

Western blot analysis of SF3A3 expression in A431 cell lysate.