

Product datasheet for **TA424418**

EXOC3 Rabbit Monoclonal Antibody [Clone ID: OTIRA2237]

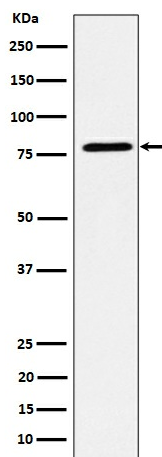
Product data:

Product Type:	Primary Antibodies
Clone Name:	OTIRA2237
Applications:	ICC/IF, IHC, IP, WB
Recommended Dilution:	WB 1:500~1:2000 IHC 1:50~1:200 ICC/IF 1:50~1:200 IP 1:50
Reactivity:	Human, Mouse, Rat
Host:	Rabbit
Isotype:	IgG
Clonality:	Monoclonal
Immunogen:	A synthesized peptide derived from human EXOC3
Specificity:	EXOC3 Antibody detects endogenous levels of total EXOC3
Formulation:	Rabbit IgG in 10mM phosphate buffered saline , pH 7.4, 150mM sodium chloride, 0.05% BSA, 0.02% sodium azide and 50% glycerol.
Concentration:	lot specific
Purification:	Affinity-chromatography
Conjugation:	Unconjugated
Storage:	Store at +4°C short term. Store at -23°C long term. Avoid freeze / thaw cycle.
Predicted Protein Size:	80kDa
Gene Name:	exocyst complex component 3
Database Link:	Entrez Gene 11336 Human O60645
Background:	Component of the exocyst complex involved in the docking of exocytic vesicles with fusion sites on the plasma membrane.



Synonyms: Exoc3; Sec6; SEC6L1; Sec6p

Product images:



Western blot analysis of EXOC3 expression in MCF7 cell lysate.