

## Product datasheet for **TA424417**

### CYFIPI Rabbit Monoclonal Antibody [Clone ID: OTIRA2236]

#### Product data:

<b>Product Type:</b>	Primary Antibodies
<b>Clone Name:</b>	OTIRA2236
<b>Applications:</b>	FC, ICC/IF, WB
<b>Recommended Dilution:</b>	WB 1:500~1:2000 ICC/IF 1:50~1:200 FC 1:50
<b>Reactivity:</b>	Human, Mouse, Rat
<b>Host:</b>	Rabbit
<b>Isotype:</b>	IgG
<b>Clonality:</b>	Monoclonal
<b>Immunogen:</b>	A synthesized peptide derived from human CYFIPI
<b>Specificity:</b>	CYFIPI Antibody detects endogenous levels of total CYFIPI
<b>Formulation:</b>	Rabbit IgG in 10mM phosphate buffered saline , pH 7.4, 150mM sodium chloride, 0.05% BSA, 0.02% sodium azide and 50% glycerol.
<b>Concentration:</b>	lot specific
<b>Purification:</b>	Affinity-chromatography
<b>Conjugation:</b>	Unconjugated
<b>Storage:</b>	Store at +4°C short term. Store at -22°C long term. Avoid freeze / thaw cycle.
<b>Predicted Protein Size:</b>	130kDa
<b>Gene Name:</b>	cytoplasmic FMR1 interacting protein 1
<b>Database Link:</b>	<a href="#">Entrez Gene 23191 Human</a> <a href="#">Q7L576</a>



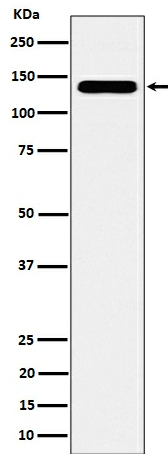
[View online »](#)

**Background:**

Component of the CYFIP1-EIF4E-FMR1 complex which binds to the mRNA cap and mediates translational repression. In the CYFIP1-EIF4E-FMR1 complex this subunit is an adapter between EIF4E and FMR1. Promotes the translation repression activity of FMR1 in brain probably by mediating its association with EIF4E and mRNA (By similarity).

**Synonyms:**

CYFIP1; P140SRA1; SHYC; SRA1

**Product images:**

Western blot analysis of CYFIP1 expression in HeLa cell lysate.