

## Product datasheet for **TA424414**

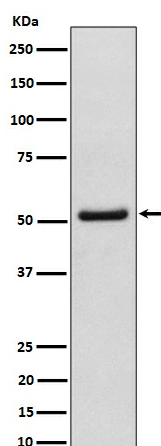
### NUP50 Rabbit Monoclonal Antibody

#### Product data:

Product Type:	Primary Antibodies
Applications:	ICC/IF, IHC, WB
Recommended Dilution:	WB 1:500~1:2000 IHC 1:50~1:200 ICC/IF 1:50~1:200
Reactivity:	Human, Mouse, Rat
Host:	Rabbit
Isotype:	IgG
Clonality:	Monoclonal
Immunogen:	A synthesized peptide derived from human NUP50
Specificity:	NUP50 Antibody detects endogenous levels of total NUP50
Formulation:	Rabbit IgG in phosphate buffered saline , pH 7.4, 150mM NaCl, 0.02% sodium azide and 50% glycerol.
Concentration:	lot specific
Purification:	Affinity-chromatography
Conjugation:	Unconjugated
Storage:	Store at +4°C short term. Store at -21°C long term. Avoid freeze / thaw cycle.
Predicted Protein Size:	55kDa
Gene Name:	nucleoporin 50kDa
Database Link:	<a href="#">Entrez Gene 10762 Human Q9UKX7</a>
Background:	Component of the nuclear pore complex that has a direct role in nuclear protein import. Actively displaces NLSs from importin-alpha, and facilitates disassembly of the importin-alpha:beta-cargo complex and importin recycling.
Synonyms:	NPAP60; NPAP60L; Nup50

[View online »](#)

## Product images:



Western blot analysis of NUP50 expression in HeLa cell lysate.