

## Product datasheet for **TA424413**

### **PIN4 Rabbit Monoclonal Antibody [Clone ID: OTIRA2232]**

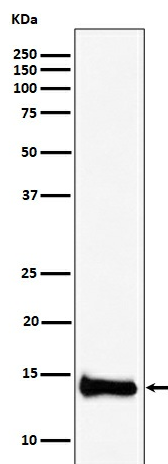
#### **Product data:**

<b>Product Type:</b>	Primary Antibodies
<b>Clone Name:</b>	OTIRA2232
<b>Applications:</b>	ICC/IF, IHC, WB
<b>Recommended Dilution:</b>	WB 1:500~1:2000 IHC 1:50~1:200 ICC/IF 1:50~1:200
<b>Reactivity:</b>	Human, Mouse, Rat
<b>Host:</b>	Rabbit
<b>Isotype:</b>	IgG
<b>Clonality:</b>	Monoclonal
<b>Immunogen:</b>	A synthesized peptide derived from human PIN4
<b>Specificity:</b>	PIN4 Antibody detects endogenous levels of total PIN4
<b>Formulation:</b>	Rabbit IgG in 10mM phosphate buffered saline , pH 7.4, 150mM sodium chloride, 0.05% BSA, 0.02% sodium azide and 50% glycerol.
<b>Concentration:</b>	lot specific
<b>Purification:</b>	Affinity-chromatography
<b>Conjugation:</b>	Unconjugated
<b>Storage:</b>	Store at +4°C short term. Store at -20°C long term. Avoid freeze / thaw cycle.
<b>Predicted Protein Size:</b>	14kDa
<b>Gene Name:</b>	peptidylprolyl cis/trans isomerase, NIMA-interacting 4
<b>Database Link:</b>	<a href="#">Entrez Gene 5303 Human Q9Y237</a>
<b>Background:</b>	Isoform 1 is involved as a ribosomal RNA processing factor in ribosome biogenesis. Binds to tightly bent AT-rich stretches of double-stranded DNA. Isoform 2 binds to double-stranded DNA.



Synonyms: EPVH; hEPVH; hPar14; hPar17; Par14; Par17; PIN4

**Product images:**



Western blot analysis of PIN4 expression in HepG2 cell lysate.