

Product datasheet for **TA424410**

PPCS Rabbit Monoclonal Antibody [Clone ID: OTIRA2229]

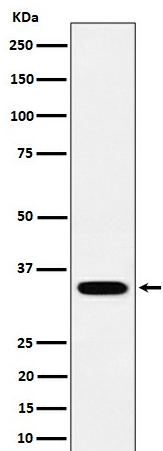
Product data:

Product Type:	Primary Antibodies
Clone Name:	OTIRA2229
Applications:	ICC/IF, IHC, WB
Recommended Dilution:	WB 1:500~1:2000 IHC 1:50~1:200 ICC/IF 1:50~1:200
Reactivity:	Human
Host:	Rabbit
Isotype:	IgG
Clonality:	Monoclonal
Immunogen:	A synthesized peptide derived from human PPCS
Specificity:	PPCS Antibody detects endogenous levels of total PPCS
Formulation:	Rabbit IgG in 10mM phosphate buffered saline , pH 7.4, 150mM sodium chloride, 0.05% BSA, 0.02% sodium azide and 50% glycerol.
Concentration:	lot specific
Purification:	Affinity-chromatography
Conjugation:	Unconjugated
Storage:	Store at +4°C short term. Store at -24°C long term. Avoid freeze / thaw cycle.
Predicted Protein Size:	34kDa
Gene Name:	phosphopantothenoylcysteine synthetase
Database Link:	Entrez Gene 79717 Human Q9HAB8
Background:	Catalyzes the first step in the biosynthesis of coenzyme A from vitamin B5, where cysteine is conjugated to 4'-phosphopantothenate to form 4-phosphopantothenoylcysteine.



Synonyms: COAB; Ppcs; PPC synthetase

Product images:



Western blot analysis of PPCS expression in SH-SY5Y cell lysate.