

Product datasheet for **TA424405**

MTAP Rabbit Monoclonal Antibody [Clone ID: OTIRA2224]

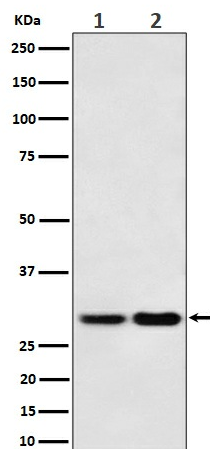
Product data:

Product Type:	Primary Antibodies
Clone Name:	OTIRA2224
Applications:	FC, ICC/IF, IHC, IP, WB
Recommended Dilution:	WB 1:500~1:2000 IHC 1:50~1:200 ICC/IF 1:50~1:200 IP 1:50 FC 1:50
Reactivity:	Human, Mouse, Rat
Host:	Rabbit
Isotype:	IgG
Clonality:	Monoclonal
Immunogen:	A synthesized peptide derived from human MTAP
Specificity:	MTAP Antibody detects endogenous levels of total MTAP
Formulation:	Rabbit IgG in 10mM phosphate buffered saline , pH 7.4, 150mM sodium chloride, 0.05% BSA, 0.02% sodium azide and 50% glycerol.
Concentration:	lot specific
Purification:	Affinity-chromatography
Conjugation:	Unconjugated
Storage:	Store at +4°C short term. Store at -21°C long term. Avoid freeze / thaw cycle.
Predicted Protein Size:	31kDa
Gene Name:	methylthioadenosine phosphorylase
Database Link:	Entrez Gene 4507 Human Q13126
Background:	Plays a major role in polyamine metabolism and is important for the salvage of both adenine and methionine.



Synonyms: BDMF; DMSFH; DMSMFH; LGMBF; MeSAdo phosphorylase; MSAP; MTAP; MTAPase

Product images:



Western blot analysis of MTAP expression in (1) 293T cell lysate; (2) NIH/3T3 cell lysate.