

## Product datasheet for **TA424387**

### **P2Y12 (P2RY12) Rabbit Monoclonal Antibody**

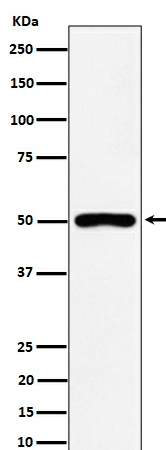
#### **Product data:**

Product Type:	Primary Antibodies
Applications:	IP, WB
Recommended Dilution:	WB 1:500~1:2000 IP 1:50
Reactivity:	Human, Mouse, Rat
Host:	Rabbit
Isotype:	IgG
Clonality:	Monoclonal
Immunogen:	A synthesized peptide derived from human P2Y12
Specificity:	P2Y12 Antibody detects endogenous levels of total P2Y12
Formulation:	Rabbit IgG in phosphate buffered saline , pH 7.4, 150mM NaCl, 0.02% sodium azide and 50% glycerol.
Concentration:	lot specific
Purification:	Affinity-chromatography
Conjugation:	Unconjugated
Storage:	Store at +4°C short term. Store at -22°C long term. Avoid freeze / thaw cycle.
Predicted Protein Size:	50kDa
Gene Name:	purinergic receptor P2Y12
Database Link:	<a href="#">Entrez Gene 64805 Human Q9H244</a>
Background:	Receptor for ADP and ATP coupled to G-proteins that inhibit the adenylyl cyclase second messenger system. Not activated by UDP and UTP. Involved in platelets aggregation.
Synonyms:	ADP glucose receptor; ADPGR; BDPLT8; HORK3; P2RY12; P2Y12; P2Y12 platelet ADP receptor; P2Y purinoceptor 12; Platelet ADP receptor; Purinergic receptor P2RY12; Purinergic receptor P2Y12; SP1999



[View online »](#)

## Product images:



Western blot analysis of P2Y12 expression in RAW 264.7 cell lysate.