

Product datasheet for **TA424377**

GRSF1 Rabbit Monoclonal Antibody

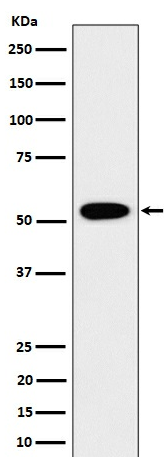
Product data:

Product Type:	Primary Antibodies
Applications:	FC, ICC/IF, IP, WB
Recommended Dilution:	WB 1:500~1:2000 ICC/IF 1:50~1:200 IP 1:50 FC 1:50
Reactivity:	Human, Mouse, Rat
Host:	Rabbit
Isotype:	IgG
Clonality:	Monoclonal
Immunogen:	A synthesized peptide derived from human GRSF1
Specificity:	GRSF1 Antibody detects endogenous levels of total GRSF1
Formulation:	Rabbit IgG in phosphate buffered saline , pH 7.4, 150mM NaCl, 0.02% sodium azide and 50% glycerol.
Concentration:	lot specific
Purification:	Affinity-chromatography
Conjugation:	Unconjugated
Storage:	Store at +4°C short term. Store at -22°C long term. Avoid freeze / thaw cycle.
Predicted Protein Size:	53kDa
Gene Name:	G-rich RNA sequence binding factor 1
Database Link:	Entrez Gene 2926 Human Q12849
Background:	Regulator of post-transcriptional mitochondrial gene expression, required for assembly of the mitochondrial ribosome and for recruitment of mRNA and lncRNA.
Synonyms:	G rich RNA sequence binding factor 1; G rich sequence binding factor 1; GRSF1



[View online »](#)

Product images:



Western blot analysis of GRSF1 expression in 293 cell lysate.