

## Product datasheet for **TA424374**

### GFPT1 Rabbit Monoclonal Antibody

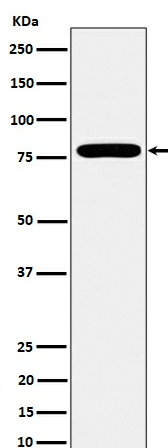
#### Product data:

Product Type:	Primary Antibodies
Applications:	IHC, IP, WB
Recommended Dilution:	WB 1:500~1:2000 IHC 1:50~1:200 IP 1:50
Reactivity:	Human, Mouse, Rat
Host:	Rabbit
Isotype:	IgG
Clonality:	Monoclonal
Immunogen:	A synthesized peptide derived from human GFPT1
Specificity:	GFPT1 Antibody detects endogenous levels of total GFPT1
Formulation:	Rabbit IgG in phosphate buffered saline , pH 7.4, 150mM NaCl, 0.02% sodium azide and 50% glycerol.
Concentration:	lot specific
Purification:	Affinity-chromatography
Conjugation:	Unconjugated
Storage:	Store at +4°C short term. Store at -21°C long term. Avoid freeze / thaw cycle.
Predicted Protein Size:	79kDa
Gene Name:	glutamine--fructose-6-phosphate transaminase 1
Database Link:	<a href="#">Entrez Gene 2673 Human Q06210</a>
Background:	Controls the flux of glucose into the hexosamine pathway. Most likely involved in regulating the availability of precursors for N- and O-linked glycosylation of proteins.
Synonyms:	CMS12; CMSTA1; GFA; GFAT; GFAT1; GFAT1m; GFPT; Gfpt1; GFPT1L; Glucosamine--fructose-6-phosphate aminotransferase [isomerizing] 1; Hexosephosphate aminotransferase 1



[View online »](#)

## Product images:



Western blot analysis of GFPT1 expression in MCF7 cell lysate.