

## Product datasheet for **TA424370**

### ALS2CR1 (NIF3L1) Rabbit Monoclonal Antibody

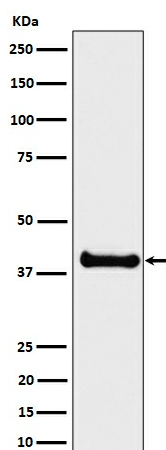
#### Product data:

Product Type:	Primary Antibodies
Applications:	ICC/IF, WB
Recommended Dilution:	WB 1:500~1:2000 ICC/IF 1:50~1:200
Reactivity:	Human
Host:	Rabbit
Isotype:	IgG
Clonality:	Monoclonal
Immunogen:	A synthesized peptide derived from human ALS2CR1
Specificity:	ALS2CR1 Antibody detects endogenous levels of total ALS2CR1
Formulation:	Rabbit IgG in phosphate buffered saline , pH 7.4, 150mM NaCl, 0.02% sodium azide and 50% glycerol.
Concentration:	lot specific
Purification:	Affinity-chromatography
Conjugation:	Unconjugated
Storage:	Store at +4°C short term. Store at -24°C long term. Avoid freeze / thaw cycle.
Predicted Protein Size:	38kDa
Gene Name:	NGG1 interacting factor 3 like 1
Database Link:	<a href="#">Entrez Gene 60491 Human Q9GZT8</a>
Background:	May function as a transcriptional corepressor through its interaction with COPS2, negatively regulating the expression of genes involved in neuronal differentiation.
Synonyms:	ALS2CR1; Nif3l1



[View online »](#)

## Product images:



Western blot analysis of ALS2CR1 expression in LNCaP cell lysate.