

Product datasheet for **TA424349**

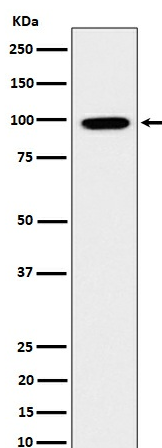
GRAF (ARHGAP26) Rabbit Monoclonal Antibody

Product data:

Product Type:	Primary Antibodies
Applications:	IHC, WB
Recommended Dilution:	WB 1:500~1:2000 IHC 1:50~1:200
Reactivity:	Human, Mouse, Rat
Host:	Rabbit
Isotype:	IgG
Clonality:	Monoclonal
Immunogen:	A synthesized peptide derived from human GRAF
Specificity:	GRAF Antibody detects endogenous levels of total GRAF
Formulation:	Rabbit IgG in phosphate buffered saline , pH 7.4, 150mM NaCl, 0.02% sodium azide and 50% glycerol.
Concentration:	lot specific
Purification:	Affinity-chromatography
Conjugation:	Unconjugated
Storage:	Store at +4°C short term. Store at -23°C long term. Avoid freeze / thaw cycle.
Predicted Protein Size:	100kDa
Gene Name:	Rho GTPase activating protein 26
Database Link:	Entrez Gene 23092 Human Q9UNA1
Background:	GTPase-activating protein for RHOA and CDC42.
Synonyms:	GRAF; GRAF1; OPHN1L; OPHN1L1

[View online »](#)

Product images:



Western blot analysis of GRAF expression in HeLa cell lysate.