

Product datasheet for **TA424334**

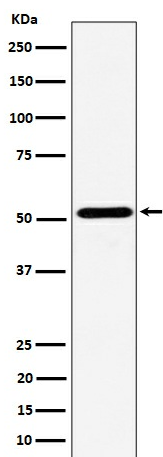
NPY5R Rabbit Monoclonal Antibody

Product data:

Product Type:	Primary Antibodies
Applications:	FC, ICC/IF, WB
Recommended Dilution:	WB 1:500~1:2000 ICC/IF 1:50~1:200 FC 1:50
Reactivity:	Human
Host:	Rabbit
Isotype:	IgG
Clonality:	Monoclonal
Immunogen:	A synthesized peptide derived from human NPY5R
Specificity:	NPY5R Antibody detects endogenous levels of total NPY5R
Formulation:	Rabbit IgG in phosphate buffered saline , pH 7.4, 150mM NaCl, 0.02% sodium azide and 50% glycerol.
Concentration:	lot specific
Purification:	Affinity-chromatography
Conjugation:	Unconjugated
Storage:	Store at +4°C short term. Store at -21°C long term. Avoid freeze / thaw cycle.
Predicted Protein Size:	51kDa
Gene Name:	neuropeptide Y receptor Y5
Database Link:	Entrez Gene 4889 Human Q15761
Background:	Receptor for neuropeptide Y and peptide YY. The activity of this receptor is mediated by G proteins that inhibit adenylate cyclase activity. Seems to be associated with food intake. Could be involved in feeding disorders.
Synonyms:	NPY 5R; NPY5R; NPY R5; NPYR5; NPY Y5; NPY5Y; NPY Y5 receptor; Y5 receptor


[View online »](#)

Product images:



Western blot analysis of NPY5R expression in Ramos cell lysate.