

## Product datasheet for **TA424309**

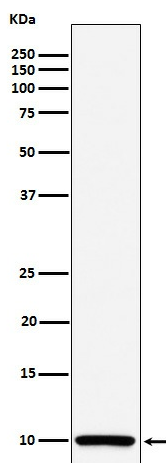
### Cytochrome C Oxidase subunit VIb (COX6B1) Rabbit Monoclonal Antibody

#### Product data:

Product Type:	Primary Antibodies
Applications:	ICC/IF, IHC, WB
Recommended Dilution:	WB 1:500~1:2000 IHC 1:50~1:200 ICC/IF 1:50~1:200
Reactivity:	Human
Host:	Rabbit
Isotype:	IgG
Clonality:	Monoclonal
Immunogen:	A synthesized peptide derived from human COX6B1
Specificity:	COX6B1 Antibody detects endogenous levels of total COX6B1
Formulation:	Rabbit IgG in phosphate buffered saline , pH 7.4, 150mM NaCl, 0.02% sodium azide and 50% glycerol.
Concentration:	lot specific
Purification:	Affinity-chromatography
Conjugation:	Unconjugated
Storage:	Store at +4°C short term. Store at -23°C long term. Avoid freeze / thaw cycle.
Predicted Protein Size:	10kDa
Gene Name:	cytochrome c oxidase subunit 6B1
Database Link:	<a href="#">Entrez Gene 1340 Human P14854</a>
Background:	Connects the two COX monomers into the physiological dimeric form.
Synonyms:	COX6B; COX6B1; COXG; COXVIb1



[View online »](#)

**Product images:**

Western blot analysis of COX6B1 expression in Caco 2 cell lysate.