

Product datasheet for TA424296

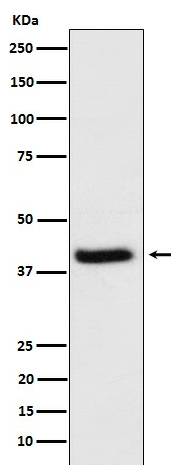
HFE Rabbit Monoclonal Antibody

Product data:

Product Type:	Primary Antibodies
Applications:	WB
Recommended Dilution:	WB 1:500~1:2000
Reactivity:	Human
Host:	Rabbit
Isotype:	IgG
Clonality:	Monoclonal
Immunogen:	A synthesized peptide derived from human HFE
Specificity:	HFE Antibody detects endogenous levels of total HFE
Formulation:	Rabbit IgG in phosphate buffered saline , pH 7.4, 150mM NaCl, 0.02% sodium azide and 50% glycerol.
Concentration:	lot specific
Purification:	Affinity-chromatography
Conjugation:	Unconjugated
Storage:	Store at +4°C short term. Store at -22°C long term. Avoid freeze / thaw cycle.
Predicted Protein Size:	40kDa
Gene Name:	hemochromatosis
Database Link:	Entrez Gene 3077 Human Q30201
Background:	Binds to transferrin receptor (TFR) and reduces its affinity for iron-loaded transferrin.
Synonyms:	Hemochromatosis; HFE; HFE1; HLAH; MVCD7; TFQTL2

[View online »](#)

Product images:



Western blot analysis of HFE expression in HeLa cell lysate.