

Product datasheet for **TA424288**

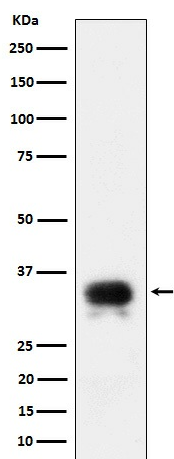
CD24 Rabbit Monoclonal Antibody

Product data:

Product Type:	Primary Antibodies
Applications:	IP, WB
Recommended Dilution:	WB 1:500~1:2000 IP 1:50
Reactivity:	Human
Host:	Rabbit
Isotype:	IgG
Clonality:	Monoclonal
Immunogen:	A synthesized peptide derived from human CD24
Specificity:	CD24 Antibody detects endogenous levels of total CD24
Formulation:	Rabbit IgG in phosphate buffered saline , pH 7.4, 150mM NaCl, 0.02% sodium azide and 50% glycerol.
Concentration:	lot specific
Purification:	Affinity-chromatography
Conjugation:	Unconjugated
Storage:	Store at +4°C short term. Store at -23°C long term. Avoid freeze / thaw cycle.
Predicted Protein Size:	31-45kDa
Gene Name:	CD24 molecule
Database Link:	Entrez Gene 100133941 Human P25063
Background:	Modulates B-cell activation responses. Signaling could be triggered by the binding of a lectin-like ligand to the CD24 carbohydrates, and transduced by the release of second messengers derived from the GPI-anchor. Promotes AG-dependent proliferation of B-cells, and prevents their terminal differentiation into antibody-forming cells.
Synonyms:	CD24; CD24 antigen; CD24A; HAS; Signal transducer CD24

[View online »](#)

Product images:



Western blot analysis of CD24 expression in SH-SY5Y cell lysate.