

Product datasheet for **TA424227**

Glycerol kinase (GK) Rabbit Monoclonal Antibody

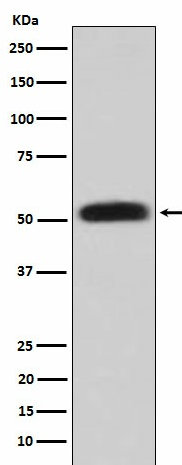
Product data:

Product Type:	Primary Antibodies
Applications:	FC, IP, WB
Recommended Dilution:	WB 1:500~1:2000 IP 1:50 FC 1:50
Reactivity:	Human, Mouse, Rat
Host:	Rabbit
Isotype:	IgG
Clonality:	Monoclonal
Immunogen:	A synthesized peptide derived from human Glycerol kinase
Specificity:	Glycerol kinase Antibody detects endogenous levels of total Glycerol kinase
Formulation:	Rabbit IgG in phosphate buffered saline , pH 7.4, 150mM NaCl, 0.02% sodium azide and 50% glycerol.
Concentration:	lot specific
Purification:	Affinity-chromatography
Conjugation:	Unconjugated
Storage:	Store at +4°C short term. Store at -22°C long term. Avoid freeze / thaw cycle.
Predicted Protein Size:	50kDa
Gene Name:	glycerol kinase
Database Link:	Entrez Gene 2710 Human P32189
Background:	Key enzyme in the regulation of glycerol uptake and metabolism.
Synonyms:	GK1; GKD; Glycerokinase



[View online »](#)

Product images:



Western blot analysis of Glycerol kinase expression in HepG2 cell lysate.