

## Product datasheet for **TA424215**

### Eph receptor B3 (EPHB3) Rabbit Monoclonal Antibody

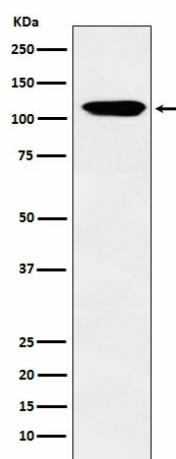
#### Product data:

Product Type:	Primary Antibodies
Applications:	FC, ICC/IF, IP, WB
Recommended Dilution:	WB 1:500~1:2000 ICC/IF 1:50~1:200 IP 1:50 FC 1:50
Reactivity:	Human, Mouse, Rat
Host:	Rabbit
Isotype:	IgG
Clonality:	Monoclonal
Immunogen:	A synthesized peptide derived from human Eph receptor B3
Specificity:	Eph receptor B3 Antibody detects endogenous levels of total Eph receptor B3
Formulation:	Rabbit IgG in phosphate buffered saline , pH 7.4, 150mM NaCl, 0.02% sodium azide and 50% glycerol.
Concentration:	lot specific
Purification:	Affinity-chromatography
Conjugation:	Unconjugated
Storage:	Store at +4°C short term. Store at -21°C long term. Avoid freeze / thaw cycle.
Predicted Protein Size:	110kDa
Gene Name:	EPH receptor B3
Database Link:	<a href="#">Entrez Gene 2049 Human P54753</a>
Background:	Receptor for members of the ephrin-B family. Binds to ephrin-B1 and -B2.
Synonyms:	Cek10; EK2; Embryonic kinase 2; ephb3; ETK2; hEK2; Mdk5; Sek4; TYRO6



[View online »](#)

## Product images:



Western blot analysis of Eph receptor B3 expression in MOLT4 cell lysate.