

## Product datasheet for **TA424211**

### **Kir2.1 (KCNJ2) Rabbit Monoclonal Antibody**

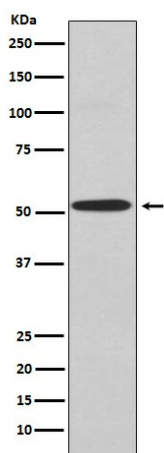
#### **Product data:**

Product Type:	Primary Antibodies
Applications:	ICC/IF, IHC, WB
Recommended Dilution:	WB 1:500~1:2000 IHC 1:50~1:200 ICC/IF 1:50~1:200
Reactivity:	Human, Mouse, Rat
Host:	Rabbit
Isotype:	IgG
Clonality:	Monoclonal
Immunogen:	A synthesized peptide derived from human Kir2.1
Specificity:	Kir2.1 Antibody detects endogenous levels of total Kir2.1
Formulation:	Rabbit IgG in phosphate buffered saline , pH 7.4, 150mM NaCl, 0.02% sodium azide and 50% glycerol.
Concentration:	lot specific
Purification:	Affinity-chromatography
Conjugation:	Unconjugated
Storage:	Store at +4°C short term. Store at -24°C long term. Avoid freeze / thaw cycle.
Predicted Protein Size:	53kDa
Gene Name:	potassium voltage-gated channel subfamily J member 2
Database Link:	<a href="#">Entrez Gene 3759 Human P63252</a>
Background:	Probably participates in establishing action potential waveform and excitability of neuronal and muscle tissues. Inward rectifier potassium channels are characterized by a greater tendency to allow potassium to flow into the cell rather than out of it.
Synonyms:	ATFB9; HHBIRK1; HHIRK1; HIRK1; IRK-1; IRK1; KCNJ2; KIR2.1; LQT7; SQT3



[View online »](#)

## Product images:



Western blot analysis of Kir2.1 expression in A549 cell lysate.