

Product datasheet for **TA424199**

Neurocan (NCAN) Rabbit Monoclonal Antibody

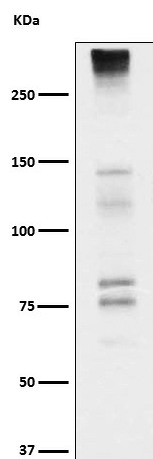
Product data:

Product Type:	Primary Antibodies
Applications:	IHC, IP, WB
Recommended Dilution:	WB 1:500~1:2000 IHC 1:50~1:200 IP 1:50
Reactivity:	Human
Host:	Rabbit
Isotype:	IgG
Clonality:	Monoclonal
Immunogen:	A synthesized peptide derived from human Neurocan
Specificity:	Neurocan Antibody detects endogenous levels of total Neurocan
Formulation:	Rabbit IgG in phosphate buffered saline , pH 7.4, 150mM NaCl, 0.02% sodium azide and 50% glycerol.
Concentration:	lot specific
Purification:	Affinity-chromatography
Conjugation:	Unconjugated
Storage:	Store at +4°C short term. Store at -23°C long term. Avoid freeze / thaw cycle.
Predicted Protein Size:	130,270kDa
Gene Name:	neurocan
Database Link:	Entrez Gene 1463 Human O14594
Background:	May modulate neuronal adhesion and neurite growth during development by binding to neural cell adhesion molecules (NG-CAM and N-CAM). Chondroitin sulfate proteoglycan; binds to hyaluronic acid.
Synonyms:	Cspg3; Ncan; NEUR; Neurocan core protein



[View online »](#)

Product images:



Western blot analysis of Neurocan expression in fetal brain cell lysate.