

Product datasheet for **TA424178**

WRN Rabbit Monoclonal Antibody

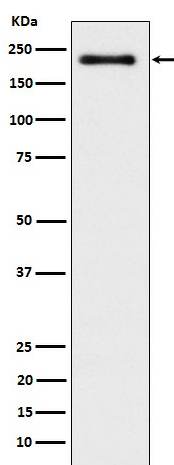
Product data:

Product Type:	Primary Antibodies
Applications:	WB
Recommended Dilution:	WB 1:500~1:2000
Reactivity:	Human
Host:	Rabbit
Isotype:	IgG
Clonality:	Monoclonal
Immunogen:	A synthesized peptide derived from human WRN
Specificity:	WRN Antibody detects endogenous levels of total WRN
Formulation:	Rabbit IgG in phosphate buffered saline , pH 7.4, 150mM NaCl, 0.02% sodium azide and 50% glycerol.
Concentration:	lot specific
Purification:	Affinity-chromatography
Conjugation:	Unconjugated
Storage:	Store at +4°C short term. Store at -23°C long term. Avoid freeze / thaw cycle.
Predicted Protein Size:	200kDa
Gene Name:	Werner syndrome RecQ like helicase
Database Link:	Entrez Gene 7486 Human Q14191
Background:	Multifunctional enzyme that has both magnesium and ATP-dependent DNA-helicase activity and 3'→5' exonuclease activity towards double-stranded DNA with a 5'-overhang. Has no nuclease activity towards single-stranded DNA or blunt-ended double-stranded DNA. Binds preferentially to DNA substrates containing alternate secondary structures, such as replication forks and Holliday junctions.
Synonyms:	Exonuclease WRN; RecQ3; RECQL2; RECQL3; Werner syndrome helicase; WRN



[View online »](#)

Product images:



Western blot analysis of WRN expression in K562 cell lysate.