

## Product datasheet for **TA424176**

### SENP2 Rabbit Monoclonal Antibody

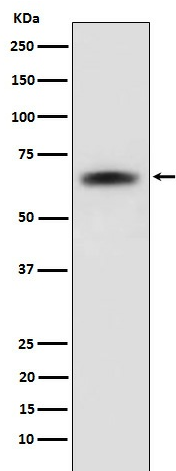
#### Product data:

Product Type:	Primary Antibodies
Applications:	ICC/IF, IHC, WB
Recommended Dilution:	WB 1:500~1:2000 IHC 1:50~1:200 ICC/IF 1:50~1:200
Reactivity:	Human
Host:	Rabbit
Isotype:	IgG
Clonality:	Monoclonal
Immunogen:	A synthesized peptide derived from human SENP2
Specificity:	SENP2 Antibody detects endogenous levels of total SENP2
Formulation:	Rabbit IgG in phosphate buffered saline , pH 7.4, 150mM NaCl, 0.02% sodium azide and 50% glycerol.
Concentration:	lot specific
Purification:	Affinity-chromatography
Conjugation:	Unconjugated
Storage:	Store at +4°C short term. Store at -22°C long term. Avoid freeze / thaw cycle.
Predicted Protein Size:	68kDa
Gene Name:	SUMO1/sentrin/SMT3 specific peptidase 2
Database Link:	<a href="#">Entrez Gene 59343 Human Q9HC62</a>
Background:	Protease that catalyzes two essential functions in the SUMO pathway: processing of full-length SUMO1, SUMO2 and SUMO3 to their mature forms and deconjugation of SUMO1, SUMO2 and SUMO3 from targeted proteins. May down-regulate CTNNB1 levels and thereby modulate the Wnt pathway.
Synonyms:	Axam2; Senp2; Sentrin specific protease 2; SMT3 specific isopeptidase 2; Smt3ip2



[View online »](#)

## Product images:



Western blot analysis of SENP2 expression in 293T cell lysate.