

## Product datasheet for **TA424169**

### Leukotriene A4 hydrolase (LTA4H) Rabbit Monoclonal Antibody

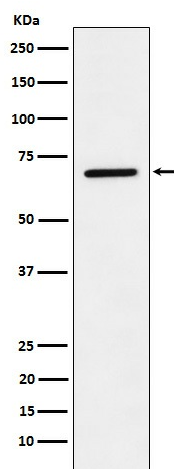
#### Product data:

Product Type:	Primary Antibodies
Applications:	FC, ICC/IF, IHC, WB
Recommended Dilution:	WB 1:500~1:2000 IHC 1:50~1:200 ICC/IF 1:50~1:200 FC 1:50
Reactivity:	Human, Mouse, Rat
Host:	Rabbit
Isotype:	IgG
Clonality:	Monoclonal
Immunogen:	A synthesized peptide derived from human LTA4H
Specificity:	LTA4H Antibody detects endogenous levels of total LTA4H
Formulation:	Rabbit IgG in phosphate buffered saline , pH 7.4, 150mM NaCl, 0.02% sodium azide and 50% glycerol.
Concentration:	lot specific
Purification:	Affinity-chromatography
Conjugation:	Unconjugated
Storage:	Store at +4°C short term. Store at -23°C long term. Avoid freeze / thaw cycle.
Predicted Protein Size:	69kDa
Gene Name:	leukotriene A4 hydrolase
Database Link:	<a href="#">Entrez Gene 4048 Human P09960</a>
Background:	Hydrolyzes an epoxide moiety of leukotriene A4 (LTA-4) to form leukotriene B4 (LTB-4). The enzyme also has some peptidase activity.
Synonyms:	LTA4; LTA4 hydrolase; LTA4H



[View online »](#)

## Product images:



Western blot analysis of LTA4H expression in A549 cell lysate.