

## Product datasheet for **TA424142**

### **PKA R2 (PRKAR2A) Rabbit Monoclonal Antibody [Clone ID: OTIRA1961]**

#### **Product data:**

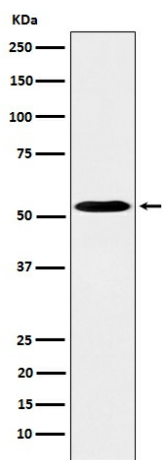
<b>Product Type:</b>	Primary Antibodies
<b>Clone Name:</b>	OTIRA1961
<b>Applications:</b>	ICC, ICC/IF, IHC, IP, WB
<b>Recommended Dilution:</b>	WB:1/1000-2000;IHC:1/100-200;ICC/IF:1/50-200;IP:1/20-50
<b>Reactivity:</b>	Human, Cow
<b>Host:</b>	Rabbit
<b>Isotype:</b>	IgG
<b>Clonality:</b>	Monoclonal
<b>Immunogen:</b>	A synthesized peptide derived from human PKA R2
<b>Specificity:</b>	PKA R2 Antibody detects endogenous levels of total PKA R2
<b>Formulation:</b>	Rabbit IgG in 10mM phosphate buffered saline , pH 7.4, 150mM sodium chloride, 0.05% BSA, 0.02% sodium azide and 50% glycerol.
<b>Concentration:</b>	lot specific
<b>Purification:</b>	Affinity-chromatography
<b>Conjugation:</b>	Unconjugated
<b>Storage:</b>	Store at +4°C short term. Store at -20°C long term. Avoid freeze / thaw cycle.
<b>Predicted Protein Size:</b>	52kDa
<b>Gene Name:</b>	protein kinase cAMP-dependent type II regulatory subunit alpha
<b>Database Link:</b>	<a href="#">Entrez Gene 5576 Human P13861</a>
<b>Background:</b>	Regulatory subunit of the cAMP-dependent protein kinases involved in cAMP signaling in cells. Type II regulatory chains mediate membrane association by binding to anchoring proteins, including the MAP2 kinase.



[View online »](#)

Synonyms: KAP2; PKR2; PRKAR2; PRKAR2A

**Product images:**



Western blot analysis of PKA R2 expression in K562 cell lysate.