

Product datasheet for **TA424136**

RSK1 p90 (RPS6KA1) Rabbit Monoclonal Antibody [Clone ID: OTIRA1955]

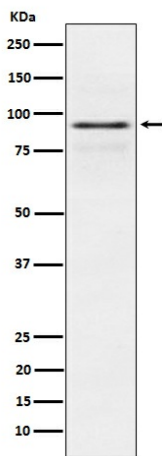
Product data:

Product Type:	Primary Antibodies
Clone Name:	OTIRA1955
Applications:	FC, ICC, IHC, IP, WB
Recommended Dilution:	WB:1/1000-2000;IHC:1/100-200;ICC/IF:1/50-200;IP:1/20-50;FC:1/20-100
Reactivity:	Human, Mouse, Rat, Pig
Host:	Rabbit
Isotype:	IgG
Clonality:	Monoclonal
Immunogen:	A synthesized peptide derived from human RSK1 p90
Specificity:	RSK1 p90 Antibody detects endogenous levels of total RSK1 p90
Formulation:	Rabbit IgG in 10mM phosphate buffered saline , pH 7.4, 150mM sodium chloride, 0.05% BSA, 0.02% sodium azide and 50% glycerol.
Concentration:	lot specific
Purification:	Affinity-chromatography
Conjugation:	Unconjugated
Storage:	Store at +4°C short term. Store at -22°C long term. Avoid freeze / thaw cycle.
Predicted Protein Size:	90 kDa
Gene Name:	ribosomal protein S6 kinase A1
Database Link:	Entrez Gene 6195 Human Q15418
Background:	Serine/threonine kinase that may play a role in mediating the growth-factor and stress induced activation of the transcription factor CREB.



Synonyms:

HU1; MAPKAPK1A p90 RSK1; p90rsk; p90RSK1; p90S6K; pp90RSK1; Ribosomal S6 kinase 1; RPS6K1 alpha; rps6ka; Rps6ka1; RSK1; S6K alpha 1

Product images:

Western blot analysis of RSK1 p90 expression in MCF7 cell lysate.