

## Product datasheet for TA424131

### GCDFP 15 (PIP) Rabbit Monoclonal Antibody [Clone ID: OTIRA1950]

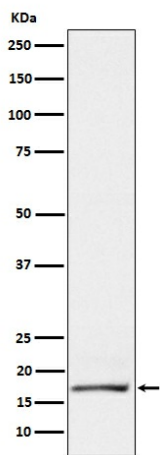
#### Product data:

<b>Product Type:</b>	Primary Antibodies
<b>Clone Name:</b>	OTIRA1950
<b>Applications:</b>	ICC, IP, WB
<b>Recommended Dilution:</b>	WB:1/1000-2000;ICC/IF:1/50-200;IP:1/20-50
<b>Reactivity:</b>	Human
<b>Host:</b>	Rabbit
<b>Isotype:</b>	IgG
<b>Clonality:</b>	Monoclonal
<b>Immunogen:</b>	A synthesized peptide derived from human GCDFP 15
<b>Specificity:</b>	GCDFP 15 Antibody detects endogenous levels of total GCDFP 15
<b>Formulation:</b>	Rabbit IgG in 10mM phosphate buffered saline , pH 7.4, 150mM sodium chloride, 0.05% BSA, 0.02% sodium azide and 50% glycerol.
<b>Concentration:</b>	lot specific
<b>Purification:</b>	Affinity-chromatography
<b>Conjugation:</b>	Unconjugated
<b>Storage:</b>	Store at +4°C short term. Store at -24°C long term. Avoid freeze / thaw cycle.
<b>Predicted Protein Size:</b>	17 kDa
<b>Gene Name:</b>	prolactin induced protein
<b>Database Link:</b>	<a href="#">Entrez Gene 5304 Human P12273</a>
<b>Background:</b>	Belongs to the PIP family.



**Synonyms:** BRST2; GCDGPI5; gp17; GPIP4; PIP; Prolactin induced protein; SABP; Secretory actin binding protein

**Product images:**



Western blot analysis of GCDFP 15 expression in T47D cell lysate.