

## Product datasheet for **TA424077**

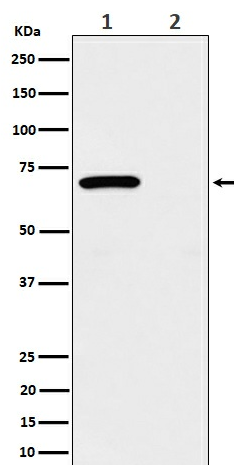
### Chk2 (CHEK2) Rabbit Monoclonal Antibody

#### Product data:

Product Type:	Primary Antibodies
Applications:	IP, WB
Recommended Dilution:	WB 1:500~1:2000 IP 1:50
Reactivity:	Human
Host:	Rabbit
Isotype:	IgG
Clonality:	Monoclonal
Immunogen:	A synthesized peptide derived from human Phospho-Chk2 (T68)
Specificity:	Phospho-Chk2 (T68) Antibody detects endogenous levels of total Phospho-Chk2 (T68)
Formulation:	Rabbit IgG in phosphate buffered saline , pH 7.4, 150mM NaCl, 0.02% sodium azide and 50% glycerol.
Concentration:	lot specific
Purification:	Affinity-chromatography
Conjugation:	Unconjugated
Storage:	Store at +4°C short term. Store at -22°C long term. Avoid freeze / thaw cycle.
Predicted Protein Size:	65kDa
Gene Name:	checkpoint kinase 2
Database Link:	<a href="#">Entrez Gene 11200 Human O96017</a>
Background:	These are known to be preferred sites for phosphorylation by ATM/ATR kinases. After DNA damage by ionizing radiation (IR), UV irradiation, or hydroxyurea treatment, Thr68 and other sites in this region become phosphorylated by ATM/ATR. The SQ/TQ cluster domain, therefore, seems to have a regulatory function.
Synonyms:	Cds1; CHEK2; CHK2; Chk2; EC 2.7.11.1; kinase Chk2; RAD53


[View online »](#)

## Product images:



Western blot analysis of Phospho-Chk2 (T68) expression in (1) 293 treated with UV and Untreated cell lysate; (2) Untreated.