

## Product datasheet for **TA424030**

### Troponin C1 (TNNC1) Rabbit Monoclonal Antibody

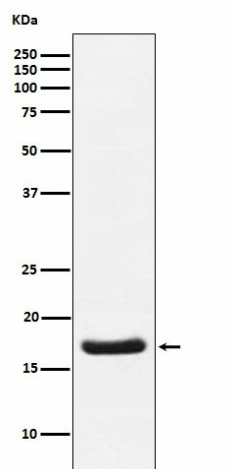
#### Product data:

Product Type:	Primary Antibodies
Applications:	IHC, WB
Recommended Dilution:	WB 1:500~1:2000 IHC 1:50~1:200
Reactivity:	Human, Mouse, Rat
Host:	Rabbit
Isotype:	IgG
Clonality:	Monoclonal
Immunogen:	A synthesized peptide derived from human Cardiac Troponin C
Specificity:	Cardiac Troponin C Antibody detects endogenous levels of total Cardiac Troponin C
Formulation:	Rabbit IgG in phosphate buffered saline , pH 7.4, 150mM NaCl, 0.02% sodium azide and 50% glycerol.
Concentration:	lot specific
Purification:	Affinity-chromatography
Conjugation:	Unconjugated
Storage:	Store at +4°C short term. Store at -24°C long term. Avoid freeze / thaw cycle.
Predicted Protein Size:	18kDa
Gene Name:	troponin C1, slow skeletal and cardiac type
Database Link:	<a href="#">Entrez Gene 7134 Human P63316</a>
Background:	Troponin is the central regulatory protein of striated muscle contraction. Tn consists of three components: Tn-I which is the inhibitor of actomyosin ATPase, Tn-T which contains the binding site for tropomyosin and Tn-C. The binding of calcium to Tn-C abolishes the inhibitory action of Tn on actin filaments.
Synonyms:	TNC; Tnnc1; tnnc1a; TNNI3; Troponin C



[View online »](#)

## Product images:



Western blot analysis of Cardiac Troponin C expression in Human fetal heart lysate.