

## Product datasheet for TA424029

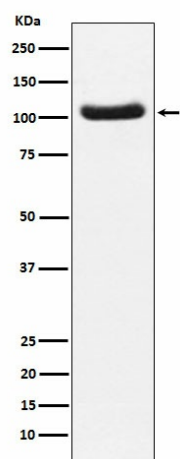
### PDE2A Rabbit Monoclonal Antibody

#### Product data:

Product Type:	Primary Antibodies
Applications:	WB
Recommended Dilution:	WB 1:500~1:2000
Reactivity:	Human, Mouse, Rat
Host:	Rabbit
Isotype:	IgG
Clonality:	Monoclonal
Immunogen:	A synthesized peptide derived from human PDE2A
Specificity:	PDE2A Antibody detects endogenous levels of total PDE2A
Formulation:	Rabbit IgG in phosphate buffered saline , pH 7.4, 150mM NaCl, 0.02% sodium azide and 50% glycerol.
Concentration:	lot specific
Purification:	Affinity-chromatography
Conjugation:	Unconjugated
Storage:	Store at +4°C short term. Store at -23°C long term. Avoid freeze / thaw cycle.
Predicted Protein Size:	106kDa
Gene Name:	phosphodiesterase 2A
Database Link:	<a href="#">Entrez Gene 5138 Human O00408</a>
Background:	Cyclic nucleotide phosphodiesterase with a dual-specificity for the second messengers cAMP and cGMP, which are key regulators of many important physiological processes.
Synonyms:	CGS PDE; cGSPDE; PDE2A; PDE2A1; PDE2A4; phosphodiesterase 2A


[View online »](#)

## Product images:



Western blot analysis of PDE2A expression in Human fetal brain lysate.