

Product datasheet for **TA424025**

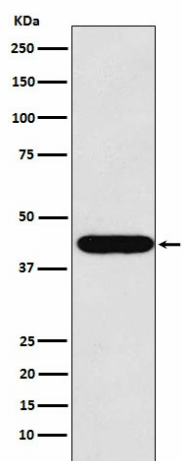
LHX2 Rabbit Monoclonal Antibody

Product data:

Product Type:	Primary Antibodies
Applications:	WB
Recommended Dilution:	WB 1:500~1:2000
Reactivity:	Human, Mouse, Rat
Host:	Rabbit
Isotype:	IgG
Clonality:	Monoclonal
Immunogen:	A synthesized peptide derived from human LHX2
Specificity:	LHX2 Antibody detects endogenous levels of total LHX2
Formulation:	Rabbit IgG in phosphate buffered saline , pH 7.4, 150mM NaCl, 0.02% sodium azide and 50% glycerol.
Concentration:	lot specific
Purification:	Affinity-chromatography
Conjugation:	Unconjugated
Storage:	Store at +4°C short term. Store at -21°C long term. Avoid freeze / thaw cycle.
Predicted Protein Size:	44kDa
Gene Name:	LIM homeobox 2
Database Link:	Entrez Gene 9355 Human P50458
Background:	Acts as a transcriptional activator. Stimulates the promoter of the alpha-glycoprotein gene. Transcriptional regulatory protein involved in the control of cell differentiation in developing lymphoid and neural cell types.
Synonyms:	hLhx2; LH2; LHX2; LIM homeobox 2

[View online »](#)

Product images:



Western blot analysis of LHX2 expression in HeLa cell lysate.