

## Product datasheet for **TA424018**

### **ALDH1A2 Rabbit Monoclonal Antibody**

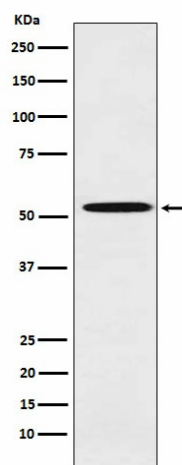
#### **Product data:**

Product Type:	Primary Antibodies
Applications:	WB
Recommended Dilution:	WB 1:500~1:2000
Reactivity:	Human, Mouse, Rat
Host:	Rabbit
Isotype:	IgG
Clonality:	Monoclonal
Immunogen:	A synthesized peptide derived from human ALDH1A2
Specificity:	ALDH1A2 Antibody detects endogenous levels of total ALDH1A2
Formulation:	Rabbit IgG in phosphate buffered saline , pH 7.4, 150mM NaCl, 0.02% sodium azide and 50% glycerol.
Concentration:	lot specific
Purification:	Affinity-chromatography
Conjugation:	Unconjugated
Storage:	Store at +4°C short term. Store at -23°C long term. Avoid freeze / thaw cycle.
Predicted Protein Size:	57kDa
Gene Name:	aldehyde dehydrogenase 1 family member A2
Database Link:	<a href="#">Entrez Gene 8854 Human O94788</a>
Background:	Recognizes as substrates free retinal and cellular retinol-binding protein-bound retinal. Does metabolize octanal and decanal but does not metabolize citral, benzaldehyde, acetaldehyde and propanal efficiently.
Synonyms:	ALDH1A2; Aldh1a7; AV116159; RALDH(II); Raldh1; RALDH 2; RalDH2; RALDH2 T



[View online »](#)

## Product images:



Western blot analysis of ALDH1A2 expression in Molt4 cell lysate.