

Product datasheet for **TA423983**

ATRIP Rabbit Monoclonal Antibody

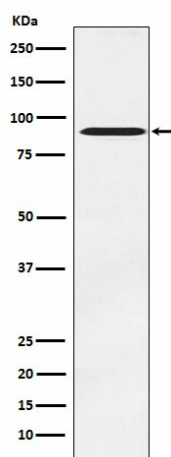
Product data:

Product Type:	Primary Antibodies
Applications:	ICC/IF, WB
Recommended Dilution:	WB 1:500~1:2000 ICC/IF 1:50~1:200
Reactivity:	Human, Mouse, Rat
Host:	Rabbit
Isotype:	IgG
Clonality:	Monoclonal
Immunogen:	A synthesized peptide derived from human ATRIP
Specificity:	ATRIP Antibody detects endogenous levels of total ATRIP
Formulation:	Rabbit IgG in phosphate buffered saline , pH 7.4, 150mM NaCl, 0.02% sodium azide and 50% glycerol.
Concentration:	lot specific
Purification:	Affinity-chromatography
Conjugation:	Unconjugated
Storage:	Store at +4°C short term. Store at -20°C long term. Avoid freeze / thaw cycle.
Predicted Protein Size:	86kDa
Gene Name:	ATR interacting protein
Database Link:	Entrez Gene 84126 Human Q8WXE1
Background:	Required for checkpoint signaling after DNA damage. Required for ATR expression, possibly by stabilizing the protein.
Synonyms:	AGS1; ATIP; Atrip



[View online »](#)

Product images:



Western blot analysis of ATRIP expression in PC-3 cell lysate.