

Product datasheet for **TA423980**

SERPING1 Rabbit Monoclonal Antibody

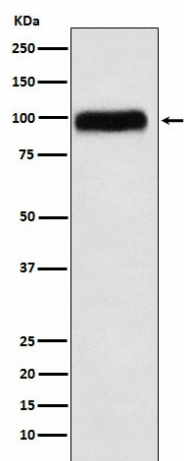
Product data:

Product Type:	Primary Antibodies
Applications:	IP, WB
Recommended Dilution:	WB 1:500~1:2000 IP 1:50
Reactivity:	Human, Mouse, Rat
Host:	Rabbit
Isotype:	IgG
Clonality:	Monoclonal
Immunogen:	A synthesized peptide derived from human SERPING1
Specificity:	SERPING1 Antibody detects endogenous levels of total SERPING1
Formulation:	Rabbit IgG in phosphate buffered saline , pH 7.4, 150mM NaCl, 0.02% sodium azide and 50% glycerol.
Concentration:	lot specific
Purification:	Affinity-chromatography
Conjugation:	Unconjugated
Storage:	Store at +4°C short term. Store at -24°C long term. Avoid freeze / thaw cycle.
Predicted Protein Size:	100kDa
Gene Name:	serpin family G member 1
Database Link:	Entrez Gene 710 Human P05155
Background:	Activation of the C1 complex is under control of the C1-inhibitor. It forms a proteolytically inactive stoichiometric complex with the C1r or C1s proteases.
Synonyms:	C1IN; C1Inh; C1NH; HAE1; HAE2



[View online »](#)

Product images:



Western blot analysis of SERPING1 expression in Human plasma lysate.