

Product datasheet for **TA423965**

BRD2 Rabbit Monoclonal Antibody

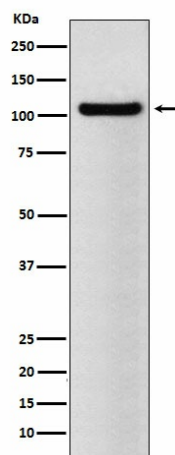
Product data:

Product Type:	Primary Antibodies
Applications:	FC, ICC/IF, IHC, WB
Recommended Dilution:	WB 1:500~1:2000 IHC 1:50~1:200 ICC/IF 1:50~1:200 FC 1:100
Reactivity:	Human
Host:	Rabbit
Isotype:	IgG
Clonality:	Monoclonal
Immunogen:	A synthesized peptide derived from human BRD2
Specificity:	BRD2 Antibody detects endogenous levels of total BRD2
Formulation:	Rabbit IgG in phosphate buffered saline , pH 7.4, 150mM NaCl, 0.02% sodium azide and 50% glycerol.
Concentration:	lot specific
Purification:	Affinity-chromatography
Conjugation:	Unconjugated
Storage:	Store at +4°C short term. Store at -21°C long term. Avoid freeze / thaw cycle.
Predicted Protein Size:	110kDa
Gene Name:	bromodomain containing 2
Database Link:	Entrez Gene 6046 Human P25440
Background:	May play a role in spermatogenesis or folliculogenesis.
Synonyms:	Brd2; FSH; FSRG1; NAT; O27.1.; RING3; RNF3



[View online »](#)

Product images:



Western blot analysis of BRD2 expression in NCCIT cell lysate.