

Product datasheet for **TA423906**

LMO4 Rabbit Monoclonal Antibody

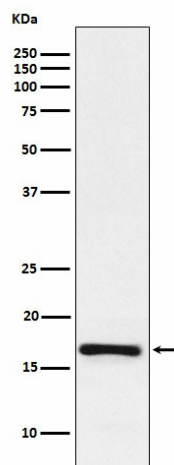
Product data:

| | |
|-------------------------|--|
| Product Type: | Primary Antibodies |
| Applications: | IP, WB |
| Recommended Dilution: | WB 1:500~1:2000 IP 1:50 |
| Reactivity: | Human, Mouse |
| Host: | Rabbit |
| Isotype: | IgG |
| Clonality: | Monoclonal |
| Immunogen: | A synthesized peptide derived from human LMO4 |
| Specificity: | LMO4 Antibody detects endogenous levels of total LMO4 |
| Formulation: | Rabbit IgG in phosphate buffered saline , pH 7.4, 150mM NaCl, 0.02% sodium azide and 50% glycerol. |
| Concentration: | lot specific |
| Purification: | Affinity-chromatography |
| Conjugation: | Unconjugated |
| Storage: | Store at +4°C short term. Store at -22°C long term. Avoid freeze / thaw cycle. |
| Predicted Protein Size: | 17kDa |
| Gene Name: | LIM domain only 4 |
| Database Link: | Entrez Gene 8543 Human P61968 |
| Background: | Probable transcriptional factor. |
| Synonyms: | LIM domain only protein 4; LMO4 |



[View online »](#)

Product images:



Western blot analysis of LMO4 expression in Jurkat cell lysate.