

## Product datasheet for TA423883

### CBFB Rabbit Monoclonal Antibody [Clone ID: OTIRA1702]

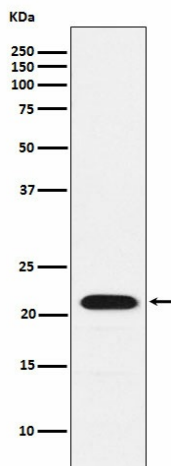
#### Product data:

<b>Product Type:</b>	Primary Antibodies
<b>Clone Name:</b>	OTIRA1702
<b>Applications:</b>	FC, ICC/IF, IHC, WB
<b>Recommended Dilution:</b>	WB 1:500~1:1000 IHC 1:50~1:200 ICC/IF 1:50~1:200 FC 1:500
<b>Reactivity:</b>	Human, Mouse, Rat
<b>Host:</b>	Rabbit
<b>Isotype:</b>	IgG
<b>Clonality:</b>	Monoclonal
<b>Immunogen:</b>	A synthesized peptide derived from human CBFb
<b>Specificity:</b>	CBFb Antibody detects endogenous levels of total CBFb
<b>Formulation:</b>	Rabbit IgG in 10mM phosphate buffered saline , pH 7.4, 150mM sodium chloride, 0.05% BSA, 0.02% sodium azide and 50% glycerol.
<b>Concentration:</b>	lot specific
<b>Purification:</b>	Affinity-chromatography
<b>Conjugation:</b>	Unconjugated
<b>Storage:</b>	Store at +4°C short term. Store at -20°C long term. Avoid freeze / thaw cycle.
<b>Predicted Protein Size:</b>	22kDa
<b>Gene Name:</b>	core-binding factor, beta subunit
<b>Database Link:</b>	<a href="#">Entrez Gene 865 Human Q13951</a>
<b>Background:</b>	CBF binds to the core site, 5'-PYGPYGGT-3', of a number of enhancers and promoters, including murine leukemia virus, polyomavirus enhancer, T-cell receptor enhancers, LCK, IL3 and GM-CSF promoters. CBFb enhances DNA binding by RUNX1.



Synonyms: CBFB; CBFbeta; PEA2; PEA2 beta; PEA2beta; PEBP2 beta; PEBP2B

**Product images:**



Western blot analysis of CBFb expression in K562 cell lysate.