

Product datasheet for **TA423871**

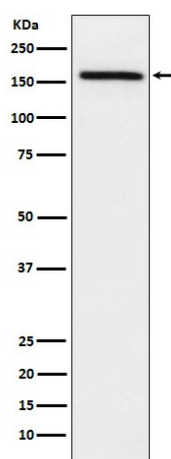
ADAMTS13 Rabbit Monoclonal Antibody

Product data:

Product Type:	Primary Antibodies
Applications:	FC, WB
Recommended Dilution:	WB 1:500~1:2000 FC 1:100
Reactivity:	Human
Host:	Rabbit
Isotype:	IgG
Clonality:	Monoclonal
Immunogen:	A synthesized peptide derived from human ADAMTS13
Specificity:	ADAMTS13 Antibody detects endogenous levels of total ADAMTS13
Formulation:	Rabbit IgG in phosphate buffered saline , pH 7.4, 150mM NaCl, 0.02% sodium azide and 50% glycerol.
Concentration:	lot specific
Purification:	Affinity-chromatography
Conjugation:	Unconjugated
Storage:	Store at +4°C short term. Store at -24°C long term. Avoid freeze / thaw cycle.
Predicted Protein Size:	154kDa
Gene Name:	ADAM metallopeptidase with thrombospondin type 1 motif 13
Database Link:	Entrez Gene 11093 Human Q76LX8
Background:	Cleaves the vWF multimers in plasma into smaller forms.
Synonyms:	ADAM-TS; ADAM-TS 13; ADAM-TS13; ADAMTS-13; ADAMTS13; C9orf8; TTP; VWF-CP; VWFCP

[View online »](#)

Product images:



Western blot analysis of ADAMTS13 expression in A549 cell lysate.