

Product datasheet for TA423855

ADAM15 Rabbit Monoclonal Antibody [Clone ID: OTIRA1674]

Product data:

Product Type:	Primary Antibodies
Clone Name:	OTIRA1674
Applications:	IHC, WB
Recommended Dilution:	WB 1:500~1:2000 IHC 1:50~1:200
Reactivity:	Human
Host:	Rabbit
Isotype:	IgG
Clonality:	Monoclonal
Immunogen:	A synthesized peptide derived from human ADAM15
Specificity:	ADAM15 Antibody detects endogenous levels of total ADAM15
Formulation:	Rabbit IgG in 10mM phosphate buffered saline , pH 7.4, 150mM sodium chloride, 0.05% BSA, 0.02% sodium azide and 50% glycerol.
Concentration:	lot specific
Purification:	Affinity-chromatography
Conjugation:	Unconjugated
Storage:	Store at +4°C short term. Store at -21°C long term. Avoid freeze / thaw cycle.
Predicted Protein Size:	90,100kDa
Gene Name:	ADAM metallopeptidase domain 15
Database Link:	Entrez Gene 8751 Human Q13444

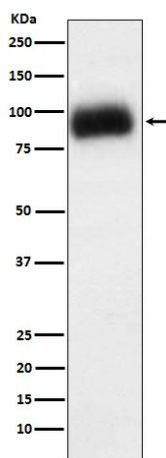


Background:

Active metalloproteinase with gelatinolytic and collagenolytic activity. Plays a role in the wound healing process. Mediates both heterotypic intraepithelial cell/T-cell interactions and homotypic T-cell aggregation. Inhibits beta-1 integrin-mediated cell adhesion and migration of airway smooth muscle cells.

Synonyms:

Adam15; MDC15; Metargidin

Product images:

Western blot analysis of ADAM15 expression in SW480 cell lysate.