

Product datasheet for **TA423823**

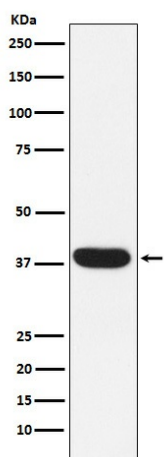
MYF5 Rabbit Monoclonal Antibody

Product data:

Product Type:	Primary Antibodies
Applications:	IP, WB
Recommended Dilution:	WB 1:1000~1:5000 IP 1:50
Reactivity:	Human, Mouse, Rat
Host:	Rabbit
Isotype:	IgG
Clonality:	Monoclonal
Immunogen:	A synthesized peptide derived from human MYF5
Specificity:	MYF5 Antibody detects endogenous levels of total MYF5
Formulation:	Rabbit IgG in phosphate buffered saline , pH 7.4, 150mM NaCl, 0.02% sodium azide and 50% glycerol.
Concentration:	lot specific
Purification:	Affinity-chromatography
Conjugation:	Unconjugated
Storage:	Store at +4°C short term. Store at -20°C long term. Avoid freeze / thaw cycle.
Predicted Protein Size:	37kDa
Gene Name:	myogenic factor 5
Database Link:	Entrez Gene 4617 Human P13349
Background:	Involved in muscle differentiation (myogenic factor). Induces fibroblasts to differentiate into myoblasts. Probable sequence specific DNA-binding protein.
Synonyms:	Class C basic helix loop helix protein 2; Myf5

[View online »](#)

Product images:



Western blot analysis of MYF5 expression in Human skeletal muscle lysate.