

Product datasheet for **TA423820**

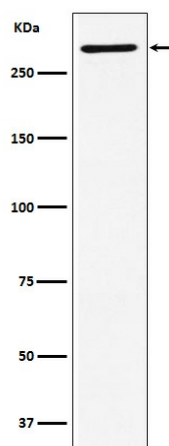
EDD (UBR5) Rabbit Monoclonal Antibody

Product data:

Product Type:	Primary Antibodies
Applications:	WB
Recommended Dilution:	WB 1:500~1:2000
Reactivity:	Human, Mouse
Host:	Rabbit
Isotype:	IgG
Clonality:	Monoclonal
Immunogen:	A synthesized peptide derived from human EDD
Specificity:	EDD Antibody detects endogenous levels of total EDD
Formulation:	Rabbit IgG in phosphate buffered saline , pH 7.4, 150mM NaCl, 0.02% sodium azide and 50% glycerol.
Concentration:	lot specific
Purification:	Affinity-chromatography
Conjugation:	Unconjugated
Storage:	Store at +4°C short term. Store at -24°C long term. Avoid freeze / thaw cycle.
Predicted Protein Size:	309kDa
Gene Name:	ubiquitin protein ligase E3 component n-recognin 5
Database Link:	Entrez Gene 51366 Human O95071
Background:	E3 ubiquitin-protein ligase which is a component of the N-end rule pathway. Recognizes and binds to proteins bearing specific amino-terminal residues that are destabilizing according to the N-end rule, leading to their ubiquitination and subsequent degradation (By similarity).
Synonyms:	DD5; EDD; EDD1; hHYD; HYD; Rat100; Ubiquitin protein ligase; UBR5


[View online »](#)

Product images:



Western blot analysis of EDD expression in SH-SY5Y cell lysate.