

## Product datasheet for **TA423819**

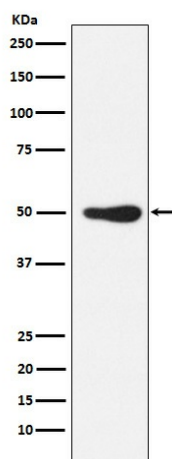
### FOXL2 Rabbit Monoclonal Antibody

#### Product data:

Product Type:	Primary Antibodies
Applications:	WB
Recommended Dilution:	WB 1:500~1:2000
Reactivity:	Human
Host:	Rabbit
Isotype:	IgG
Clonality:	Monoclonal
Immunogen:	A synthesized peptide derived from human FOXL2
Specificity:	FOXL2 Antibody detects endogenous levels of total FOXL2
Formulation:	Rabbit IgG in phosphate buffered saline , pH 7.4, 150mM NaCl, 0.02% sodium azide and 50% glycerol.
Concentration:	lot specific
Purification:	Affinity-chromatography
Conjugation:	Unconjugated
Storage:	Store at +4°C short term. Store at -23°C long term. Avoid freeze / thaw cycle.
Predicted Protein Size:	50kDa
Gene Name:	forkhead box L2
Database Link:	<a href="#">Entrez Gene 668 Human P58012</a>
Background:	Transcriptional regulator. Critical factor essential for ovary differentiation and maintenance, and repression of the genetic program for somatic testis determination. Prevents trans-differentiation of ovary to testis through transcriptional repression of the Sertoli cell-promoting gene SOX9 (By similarity).
Synonyms:	BPES; BPES1; FOXL2; PFRK; PINTO; POF3



[View online »](#)

**Product images:**

Western blot analysis of FOXL2 expression in Jurkat cell lysate.