

Product datasheet for **TA423807**

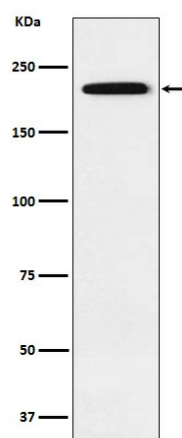
GLI3 Rabbit Monoclonal Antibody

Product data:

Product Type:	Primary Antibodies
Applications:	ICC/IF, WB
Recommended Dilution:	WB 1:500~1:2000 ICC/IF 1:50~1:200
Reactivity:	Human
Host:	Rabbit
Isotype:	IgG
Clonality:	Monoclonal
Immunogen:	A synthesized peptide derived from human Gli3
Specificity:	Gli3 Antibody detects endogenous levels of total Gli3
Formulation:	Rabbit IgG in phosphate buffered saline , pH 7.4, 150mM NaCl, 0.02% sodium azide and 50% glycerol.
Concentration:	lot specific
Purification:	Affinity-chromatography
Conjugation:	Unconjugated
Storage:	Store at +4°C short term. Store at -22°C long term. Avoid freeze / thaw cycle.
Predicted Protein Size:	190kDa
Gene Name:	GLI family zinc finger 3
Database Link:	Entrez Gene 2737 Human P10071
Background:	Has a dual function as a transcriptional activator and a repressor of the sonic hedgehog (Shh) pathway, and plays a role in limb development. The full-length GLI3 form (GLI3FL) after phosphorylation and nuclear translocation, acts as an activator (GLI3A) while GLI3R, its C-terminally truncated form, acts as a repressor.
Synonyms:	ACLS; GCPS; GLI3; GLI3FL; PAPA; PAPA1; PAPB; PHS; PPDIV

[View online »](#)

Product images:



Western blot analysis of Gli3 expression in 293 cell lysate.