

Product datasheet for **TA423805**

CHRM2 Rabbit Monoclonal Antibody

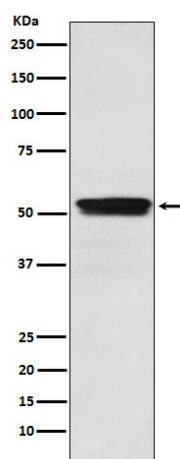
Product data:

Product Type:	Primary Antibodies
Applications:	IHC, IP, WB
Recommended Dilution:	WB 1:500~1:2000 IHC 1:50~1:200 IP 1:50
Reactivity:	Human, Mouse, Rat
Host:	Rabbit
Isotype:	IgG
Clonality:	Monoclonal
Immunogen:	A synthesized peptide derived from human ACM2
Specificity:	ACM2 Antibody detects endogenous levels of total ACM2
Formulation:	Rabbit IgG in phosphate buffered saline , pH 7.4, 150mM NaCl, 0.02% sodium azide and 50% glycerol.
Concentration:	lot specific
Purification:	Affinity-chromatography
Conjugation:	Unconjugated
Storage:	Store at +4°C short term. Store at -21°C long term. Avoid freeze / thaw cycle.
Predicted Protein Size:	52kDa
Gene Name:	cholinergic receptor muscarinic 2
Database Link:	Entrez Gene 1129 Human P08172
Background:	The muscarinic acetylcholine receptor mediates various cellular responses, including inhibition of adenylate cyclase, breakdown of phosphoinositides and modulation of potassium channels through the action of G proteins. Primary transducing effect is adenylate cyclase inhibition.
Synonyms:	AChR; Acm2; CHRM2; HM2



[View online »](#)

Product images:



Western blot analysis of ACM2 expression in U87-MG cell lysate.