

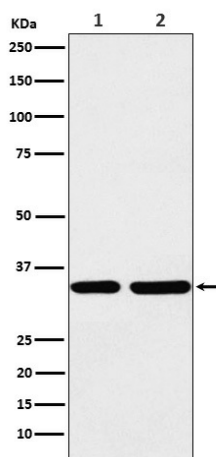
## Product datasheet for **TA423796**

### STUB1 Rabbit Monoclonal Antibody

#### Product data:

Product Type:	Primary Antibodies
Applications:	FC, ICC/IF, IP, WB
Recommended Dilution:	WB 1:1000~1:5000 ICC/IF 1:50~1:200 IP 1:80 FC 1:50
Reactivity:	Human, Mouse, Rat
Host:	Rabbit
Isotype:	IgG
Clonality:	Monoclonal
Immunogen:	A synthesized peptide derived from human STUB1
Specificity:	STUB1 Antibody detects endogenous levels of total STUB1
Formulation:	Rabbit IgG in phosphate buffered saline , pH 7.4, 150mM NaCl, 0.02% sodium azide and 50% glycerol.
Concentration:	lot specific
Purification:	Affinity-chromatography
Conjugation:	Unconjugated
Storage:	Store at +4°C short term. Store at -22°C long term. Avoid freeze / thaw cycle.
Predicted Protein Size:	35kDa
Gene Name:	STIP1 homology and U-box containing protein 1
Database Link:	<a href="#">Entrez Gene 10273 Human Q9UNE7</a>
Background:	E3 ubiquitin-protein ligase which targets misfolded chaperone substrates towards proteasomal degradation. Ubiquitinates NOS1 in concert with Hsp70 and Hsp40. Modulates the activity of several chaperone complexes, including Hsp70, Hsc70 and Hsp90.
Synonyms:	CHIP; HSPABP2; NY-CO-7; SDCCAG7; STUB1; UBOX1


[View online »](#)

**Product images:**


Western blot analysis of STUB1 expression in (1) HEK293 cell lysate; (2) Mouse brain lysate.