

Product datasheet for **TA423790**

Sprouty 2 (SPRY2) Rabbit Monoclonal Antibody

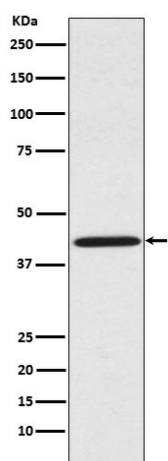
Product data:

Product Type:	Primary Antibodies
Applications:	ICC/IF, IHC, IP, WB
Recommended Dilution:	WB 1:500~1:2000 IHC 1:50~1:200 ICC/IF 1:50~1:200 IP 1:50
Reactivity:	Human, Rat
Host:	Rabbit
Isotype:	IgG
Clonality:	Monoclonal
Immunogen:	A synthesized peptide derived from human Sprouty 2
Specificity:	Sprouty 2 Antibody detects endogenous levels of total Sprouty 2
Formulation:	Rabbit IgG in phosphate buffered saline , pH 7.4, 150mM NaCl, 0.02% sodium azide and 50% glycerol.
Concentration:	lot specific
Purification:	Affinity-chromatography
Conjugation:	Unconjugated
Storage:	Store at +4°C short term. Store at -24°C long term. Avoid freeze / thaw cycle.
Predicted Protein Size:	42kDa
Gene Name:	sprouty RTK signaling antagonist 2
Database Link:	Entrez Gene 10253 Human O43597
Background:	May function as an antagonist of fibroblast growth factor (FGF) pathways and may negatively modulate respiratory organogenesis.
Synonyms:	hSPRY2; Sprouty2; SPRY2



[View online »](#)

Product images:



Western blot analysis of Sprouty 2 expression in HeLa cell lysate.