

Product datasheet for **TA423784**

Heparanase 1 (HPSE) Rabbit Monoclonal Antibody

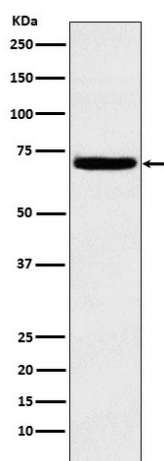
Product data:

Product Type:	Primary Antibodies
Applications:	IP, WB
Recommended Dilution:	WB 1:500~1:2000 IP 1:50
Reactivity:	Human, Mouse, Rat
Host:	Rabbit
Isotype:	IgG
Clonality:	Monoclonal
Immunogen:	A synthesized peptide derived from human Heparanase 1
Specificity:	Heparanase 1 Antibody detects endogenous levels of total Heparanase 1
Formulation:	Rabbit IgG in phosphate buffered saline , pH 7.4, 150mM NaCl, 0.02% sodium azide and 50% glycerol.
Concentration:	lot specific
Purification:	Affinity-chromatography
Conjugation:	Unconjugated
Storage:	Store at +4°C short term. Store at -21°C long term. Avoid freeze / thaw cycle.
Predicted Protein Size:	70kDa
Gene Name:	heparanase
Database Link:	Entrez Gene 10855 Human Q9Y251
Background:	Endoglycosidase which is a cell surface and extracellular matrix-degrading enzyme. Cleaves heparan sulfate proteoglycans (HSPGs) into heparan sulfate side chains and core proteoglycans.
Synonyms:	HEP; Heparanase; Heparanase1; HPA; Hpa 1; Hpa1 HPR1; HPSE1; HSE1



[View online »](#)

Product images:



Western blot analysis of Heparanase 1 expression in K562 cell lysate.