

Product datasheet for **TA423767**

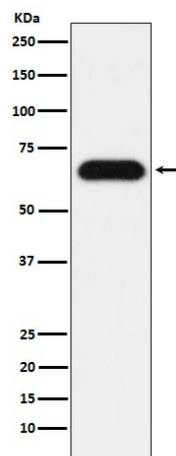
Nucleostemin (GNL3) Rabbit Monoclonal Antibody

Product data:

Product Type:	Primary Antibodies
Applications:	FC, ICC/IF, WB
Recommended Dilution:	WB 1:500~1:2000 ICC/IF 1:50~1:200 FC 1:50
Reactivity:	Human
Host:	Rabbit
Isotype:	IgG
Clonality:	Monoclonal
Immunogen:	A synthesized peptide derived from human Nucleostemin
Specificity:	Nucleostemin Antibody detects endogenous levels of total Nucleostemin
Formulation:	Rabbit IgG in phosphate buffered saline , pH 7.4, 150mM NaCl, 0.02% sodium azide and 50% glycerol.
Concentration:	lot specific
Purification:	Affinity-chromatography
Conjugation:	Unconjugated
Storage:	Store at +4°C short term. Store at -22°C long term. Avoid freeze / thaw cycle.
Predicted Protein Size:	65kDa
Gene Name:	G protein nucleolar 3
Database Link:	Entrez Gene 26354 Human Q9BVP2
Background:	May be required to maintain the proliferative capacity of stem cells and may play an important role in tumorigenesis.
Synonyms:	E2IG3; GNL3; NNP47; NS; Nucleostemin

[View online »](#)

Product images:



Western blot analysis of Nucleostemin expression in HeLa cell lysate.