

Product datasheet for **TA423699**

CaMKI (CAMK1) Rabbit Monoclonal Antibody

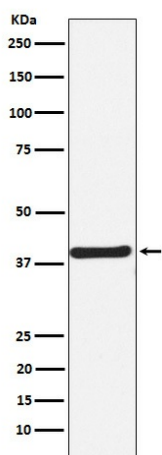
Product data:

Product Type:	Primary Antibodies
Applications:	ICC/IF, IHC, WB
Recommended Dilution:	WB 1:500~1:2000 IHC 1:50~1:200 ICC/IF 1:50~1:200
Reactivity:	Human, Mouse, Rat
Host:	Rabbit
Isotype:	IgG
Clonality:	Monoclonal
Immunogen:	A synthesized peptide derived from human CaMKI
Specificity:	CaMKI Antibody detects endogenous levels of total CaMKI
Formulation:	Rabbit IgG in phosphate buffered saline , pH 7.4, 150mM NaCl, 0.02% sodium azide and 50% glycerol.
Concentration:	lot specific
Purification:	Affinity-chromatography
Conjugation:	Unconjugated
Storage:	Store at +4°C short term. Store at -23°C long term. Avoid freeze / thaw cycle.
Predicted Protein Size:	41kDa
Gene Name:	calcium/calmodulin dependent protein kinase I
Database Link:	Entrez Gene 8536 Human Q14012
Background:	Calcium/calmodulin-dependent protein kinase that operates in the calcium-triggered CaMKK-CaMK1 signaling cascade and, upon calcium influx, regulates transcription activators activity, cell cycle, hormone production, cell differentiation, actin filament organization and neurite outgrowth. Recognizes the substrate consensus sequence [MVLIF]-x-R-x(2)-[ST]-x(3)-[MVLIF].
Synonyms:	CaM K1; CaMK 1; CaMK1 alpha; CAMK1 PEN; CAMK I; CaM KI; CaMKI alpha



[View online »](#)

Product images:



Western blot analysis of CaMKI expression in SH-SY5Y cell lysate.