

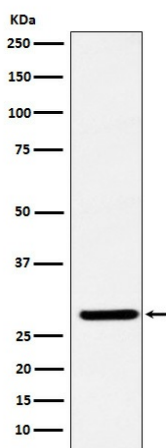
## Product datasheet for **TA423678**

### FHL2 Rabbit Monoclonal Antibody

#### Product data:

Product Type:	Primary Antibodies
Applications:	ICC/IF, IP, WB
Recommended Dilution:	WB 1:500~1:1000 ICC/IF 1:50~1:200 IP 1:40
Reactivity:	Human, Mouse, Rat
Host:	Rabbit
Isotype:	IgG
Clonality:	Monoclonal
Immunogen:	A synthesized peptide derived from human FHL2
Specificity:	FHL2 Antibody detects endogenous levels of total FHL2
Formulation:	Rabbit IgG in phosphate buffered saline , pH 7.4, 150mM NaCl, 0.02% sodium azide and 50% glycerol.
Concentration:	lot specific
Purification:	Affinity-chromatography
Conjugation:	Unconjugated
Storage:	Store at +4°C short term. Store at -23°C long term. Avoid freeze / thaw cycle.
Predicted Protein Size:	32kDa
Gene Name:	four and a half LIM domains 2
Database Link:	<a href="#">Entrez Gene 2274 Human Q14192</a>
Background:	May function as a molecular transmitter linking various signaling pathways to transcriptional regulation. Negatively regulates the transcriptional repressor E4F1 and may function in cell growth.
Synonyms:	AAG11; DRAL; Fhl2; SLIM3

[View online »](#)

**Product images:**

Western blot analysis of FHL2 expression in SW480 cell lysate.